



Acrylic-siloxane texture coating for decorative effects in exterior.

CE-marked according to 15824:2009 Standard.

Mould and algae resistant formula.

Mod.51 Rev 64

Last update 22/07/2020



CHARACTERISTICS:

MURO URBANO is an acrylic-siloxane coating for the protection and decoration of exterior walls. Fibre-reinforced, with excellent water-repellence, and weatherproof. It has good vapour permeability, good flexibility and a moulds and algae resistant formula. **MURO URBANO** is composed of acrylic resins with siloxane additives, selected marble and quartz aggregates, synthetic fibres, lightfast and UV-resistant pigments, and special additives to provide easy application. Its special composition and grain size with maximum grain 0.7 mm leave room for the applicator's creativity who can create with **MURO URBANO** both textured effects, polished ones, concrete effects and special designs, even on exterior insulation finishing systems (**EIFS**).

USE:

MURO URBANO is suitable for application on exterior surfaces, to create special unique designs, combining a pleasant finish with weather resistance, water-repellence, impact and abrasion resistance. After adequate surface preparation **MURO URBANO** can be applied on concrete, lime plaster, lime-cement plaster, cement plaster, **INTOCEM PLUS**, **INTOCEM ETICS**, **INTOCEM ETICS LIGHT**, **INTOCALCE**, exterior thermal insulation systems, mineral and synthetic old paints and coatings.

PREPARATION AND APPLICATION

Erect scaffolding so as to allow work to continue uninterrupted up to natural boundaries of the building. Brush, scrape and remove any element not perfectly adherent or that might compromise subsequent application.

Surface preparation:

New exterior insulation systems (EIFS): wait until the reinforced skim coat is perfectly cured, remove all dust and dirt, make sure there is no humidity.

New substrate: remove any dust and dirt, make sure there is no humidity and that the plaster is perfectly cured in order to avoid the development of stains. In case the substrate is not perfectly sound and solid, consolidate it with 1 coat of **RESINPOL** or **PROTEXIL® PRIMER**, in order to keep the vapour permeability of the substrate unaltered. On particularly chalky substrates, apply a 2nd coat after 4-8 hours.

Renovation: in the presence of old, deteriorated, non-adherent paints and coatings, remove them mechanically or with the aid of a paint remover. For all renovation works, first perform a high pressure washing of the surface and sanitize it with **MUROSANO RISANANTE**. Let it act for at least 8 hours. Apply 1 coat of deep-penetrating, consolidating primer **RESINPOL** or alternatively **PROTEXIL® PRIMER**, in order to keep the vapour permeability of the substrate unaltered. Treat in advance any efflorescence with specific intervention. Also treat in advance any humidity or water infiltration. In the case of rising damp treat the surface with dehumidifying plaster **ARCADIA® RISANANTE**. In case of hairline cracks, microcracks and irregularities of the substrate, perform a skimcoat with **INTOCEM ETICS LIGHT**, **INTOCALCE**, **INTOCEM PLUS** or **INTOCEM ETICS**. Wait until

Acrylic-siloxane texture coating for decorative effects in exterior.

CE-marked according to 15824:2009 Standard.

Mould and algae resistant formula.

Mod.51 Rev 64

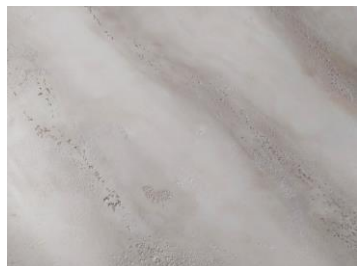
Last update 22/07/2020

the plaster is perfectly cured before proceeding.

Application:

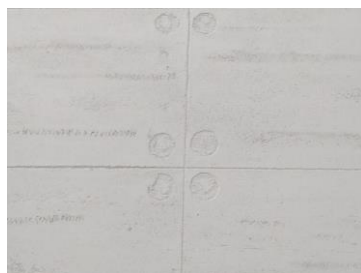
On a dry, clean, solid substrate, free from any element that may compromise adhesion, apply 1 coat of **QUARZITE FINISH EXTRA** acrylic-siloxane filling quartz paint by roller or brush, coloured in the same colour selected for **MURO URBANO**. Wait until the surface is fully dry, then apply a 1st coat of **MURO URBANO**. **MURO URBANO** is ready to use. Mix it well, then apply by stainless steel trowel homogeneously on the whole surface with an approximate consumption rate of 0.9 - 1 kg/m². After complete drying, apply another 1-2 coats according to the effect desired. Maximum grain size of **MURO URBANO** is 0.7 mm so it is necessary to apply it in at least 2 coats. When applying it on thermal insulation systems (EIFS) we recommend application of 3 coats for all effects which require engraving the material such as Concrete, Cemento Materico, Brick effects, in order to provide a minimum thickness of 1.2 mm even on the engraved area.

Stone effect :



Apply 2nd coat by stainless steel trowel homogeneously on the whole surface in a thick layer (consumption 1.4 – 1.7 kg/m²), let it dry for 10-20 minutes depending on temperature and humidity, then create the pitted design with Doormat tool. Wait 20-40 minutes before polishing the surface by stainless steel trowel. Polish the surface with flat blade, not with the side of the blade as you would normally do with lime plaster.

Concrete effect :



Apply last coat by stainless steel trowel homogeneously on the whole surface in a thick layer (consumption 1.3 – 1.5 kg/m²), let it dry for 10-20 minutes depending on temperature and humidity, then carve the surface and design the holes using a stopper or tube, then desing the blocks with the aid of a beam or masking tape. Wait 20-40 minutes, then polish the surface by stainless steel trowel. Polish the surface with flat blade, not with the side of the blade as you would normally do with lime plaster. After approx. 2 hours design the joints with a sharp object (eg. paint knife) and the aid of a beam. Once completely dry, it is possible to refinish the joints by sanding them with fine sand paper.

Acrylic-siloxane texture coating for decorative effects in exterior.

CE-marked according to 15824:2009 Standard.

Mould and algae resistant formula.

Mod.51 Rev 64

Last update 22/07/2020

Cemento Materico effect :



During application of the 1st coat (or 2nd coat in case of application on EIFS), apply the product homogeneously on the whole surface, then carve it with Matt tool. Once the surface is completely dry, apply last coat by stainless steel towel irregularly, creating patches, with recommended consumption rate of 1-1.1 kg/m², leaving some areas uncovered. It is possible to use 2 different colours to achieve a smoky effect. Let the applied material dry for 10-20 minutes according to humidity and temperature, then lightly design in with Doormat tool.

Cassero effect :



Second coat is applied in two steps. First place the masking tape either horizontally or vertically according to the effect desired, in order to design alternate concrete planks. Then proceed to create the first set of planks, by applying **MURO URBANO** by stainless steel trowel with approximate consumption rate of 0.7-0.8 kg/m². Let it dry for 5-10 minutes, then design the surface with Woody tool. Let it again dry for 20-40 minutes according to temperature and humidity then polish the surface with light strokes with flat blade, making sure not to erase the pattern. Remove the masking tape. Once completely dry, apply the masking tape on the planks created and use the same technique to create the second set.

Brick effect:



Apply the 2nd coat (or 3rd in case of application on EIFS) by stainless steel trowel homogeneously on the whole surface in a thick layer (consumption rate 1.6 - 1.8 kg/m²). Let it dry for 10-20 minutes depending on temperature and humidity, then create the pitted design with Doormat tool (optional). Let it dry approximately 20 - 40 minutes according to temperature and humidity, then polish the surface with stainless steel trowel. Polish the surface with flat blade, not with the side of the blade as you would normally do with lime plaster. After about 2 hours, design the joints by carving the surface with a sharp object (eg. scratch awl) and with the aid of a beam. Once completely dry, it is possible to refinish the joints by sanding them with fine sand paper.

Decoration (optional) :

It is possible to further decorate the surface by applying **TENDENZE** or **ART METAL** after at least 24 hours.

Acrylic-siloxane texture coating for decorative effects in exterior.

CE-marked according to 15824:2009 Standard.

Mould and algae resistant formula.

Mod.51 Rev 64

Last update 22/07/2020

IMPORTANT NOTES:

- Before application, make sure that the substrate is perfectly dry and cured and well adherent. Surface must be clean and free from dirt, oil, grease, mould, fungus, bacteria, efflorescence or any other defect that could impair adherence or successful results.
- Do not allow product to freeze (minimum 5°C).
- Store product in a cool, dry place and do not expose to direct sunlight.
- Use product at a temperature of the work environment and treated surface between 8°C and 35°C. Relative humidity must not exceed 75%.
- Do not allow drying to take place with temperature of the work environment and treated surface below 5°C.
- Do not apply product if rain is likely or in the presence of strong sunlight, strong winds or persistent fog.
- Protect treated surfaces from rain for the time required to allow product to fully harden.
- Scaffolding should be erected in a way that allows work to be continued uninterrupted until a natural boundary of the building is reached, to avoid seams, overlaps and differences in shade.
- When coloured product is to be used, ensure that a sufficient quantity of the same batch of material is available to complete the entire job, or at least to complete whole sections that will not reveal differences in shade.

TECHNICAL DATA:

Drying at 20°C and 65% R.H.	Dust dry 4-5 hours, In depth 12-16 hours. Attention: these values can vary considerably according to temperature, relative humidity and applied thickness.
Grain size	0.7 mm
Consumption rate	First coat: 0.9-1 kg/m ² ; Stone effect : 1.4-1.7 kg/m ² Concrete effect : 1.3-1.5 kg/m ² Cemento Materico effect : 1-1.1 kg/m ² Cassero effect : 1.4-1.6 kg/m ² Brick effect : 1.6-1.8 kg/m ²
Type	Water-based
pH	8.5±1.0
Volume solids at 105°C	84,5 ± 1%
Liquid water permeability (UNI EN 1062-3)	w= 0.044 kg/(m ² h ^{0.5}) class W₃ – low permeability
Water vapour permeability (UNI EN ISO 7783-2)	Sd = 0.4656 m for a thickness of 1.09 mm μ=427 class V₂ – medium permeability



Acrylic-siloxane texture coating for decorative effects in exterior.

CE-marked according to 15824:2009 Standard.

Mould and algae resistant formula.

Mod.51 Rev 64

Last update 22/07/2020

Bond strenght (UNI EN 1542)	fh = 0.4MPa
Thermal conductivity (UNI EN 1745)	$\lambda_{10,dry} = 1.11 \text{ W/m-K (P=50\%)}$ $\lambda_{10,dry} = 1.21 \text{ W/m-K (P=90\%)}$
Colours	White ; "I Colori del Colore", "Tecnologie per facciate" .
Package	25 kg

Emission limits of Volatile Organic Compounds (VOC) according to directive 2004/42/CE:

Classification: A/ c) "coatings for exterior walls of mineral substrate";

Limit Phase II (from 01/01/ 2010): 40 g/l

VOC: 35 g/l (max).

The information contained herein is the result of scrupulously controlled tests and expresses our best and most up-to-date knowledge. Moreover this information is intended for informational purposes only. The manufacturer cannot be held responsible for the improper use of these products, nor does the information contained herein provide a pretext for disputes of any type. This is also in light of the fact that the working methods employed are beyond our control.

Please refer to the relevant Safety Data Sheet.